

Azure Biosystems™ c280

Powerful and Economical
Chemiluminescent Imaging



Smart Imaging Technology

No Focusing

Regardless of the size of your gel, all images are in focus.

No Positioning

Perfect images no matter where you place the sample.

Automatic Imaging

Select the application, and the instrument will choose the light sources and filters for you.



Tools for...

- ✓ Automatic Lane and Band Detection
- ✓ Molecular Weight Analysis
- ✓ Quantity Calibration
- ✓ Annotation
- ✓ Multiplex Analysis

Application Flexibility



Chemiluminescence

Picogram Detection of Proteins with Chemiluminescent Westerns

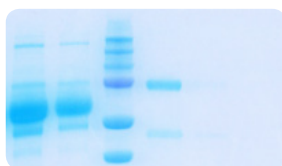
The Azure cSeries provides accurate and fast chemiluminescent detection, as well as the sensitivity, dynamic range, and linearity needed for quantitative blot analysis. Get the best picture every time, and stop wasting money in the darkroom.



Blue Light Imaging
SYBR® Safe, SYBR® Gold,
SYBR® Green

“Safe” Dye Detection

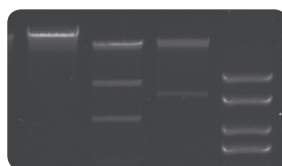
An alternative to ethidium bromide, less-harmful ‘Safe’ dyes can be imaged with the EPI Blue LEDs standard in the system.



White Light Imaging
Coomassie Blue, Silver Stain

Protein Analysis

Protein gels stained with Coomassie blue or silver stain can easily be imaged using the visible light application.



UV Imaging
Ethidium Bromide

Fluorescent Detection for UV

With a dual wavelength 302nm and 365nm UV transilluminator, images of ethidium bromide-stained DNA gels or Stain-free gels can be captured. An interlock switch prevents the accidental exposure of UV.

AzureSpot Analysis

With the c280, AzureSpot software provides tools for the analysis of gels and blots, AzureSpot makes complex analysis a simple process. Designed to be either fully automated or manually configured, AzureSpot provides flexibility and accuracy for your data analysis.

AzureSpot includes: Automatic PDF report generator, Lane creation, Background subtraction, Band detection, Molecular size/pI calibration, Quantity calibration toolbox, Module for easy shape selection/deselection, Wide range of data fields to display in measurements, Annotation tools for comments and highlighting of image.

Remarkable Design



High Resolution Camera

Capture the finest details of your sample with 6 MP high resolution imaging.

Integrated Computer

Touch screen computer streamlines the image capture workflow.

Workflow Imaging

Software is driven by application protocols, which are recalled by a touch of a button.

Multiple Filter Positions

EtBr filter included.

Lens Automation

Computer controlled, hands free lens saves times and ensure images are always in focus.

Light Tight Darkroom

Darkroom with automated software controls.

EPI White Lights

Provide overhead illumination for white light imaging.

EPI Blue LED at 470 nm for Blue-Excited DNA Dyes

Use less damaging, environmentally friendly dyes like SYBR® Safe thanks to blue light excitation that comes standard.

Connect to an external computer

Quickly connect to an external system via USB.

3 USB Ports

Two USB ports for connection to USB devices, one USB port for connection with an external PC.

Safety Lock

Prevent accidental UV exposure with interlock safety switch.

Visible Dye Imaging

White light imaging for colorimetric stains such as Coomassie blue or similar.

Dual-Wavelength UV

UV illumination with peaks at 302 and 365 nm. Compatible with a wide range of dyes including ethidium bromide, SYBR® green, SYBR gold, SYPRO® orange, Fluorescein, RadiantRed®, Texas Red®, SYPRO Red.

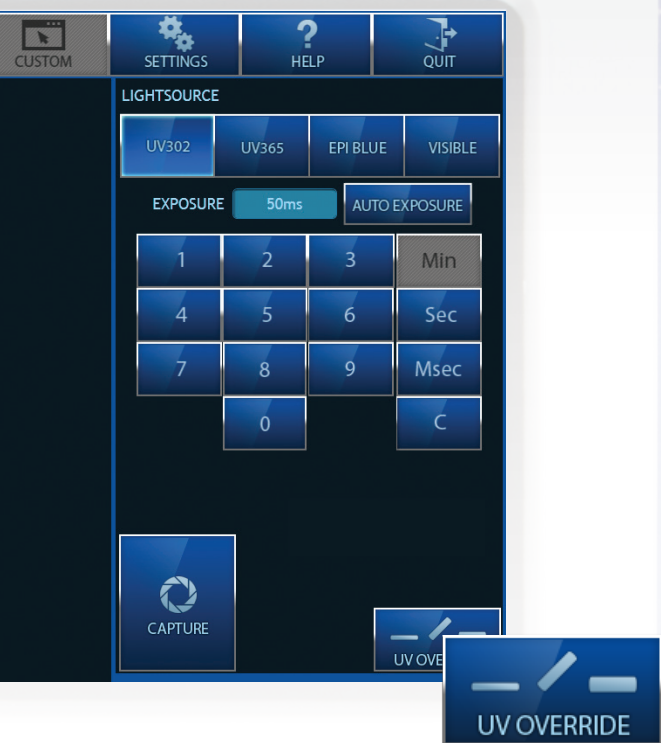


Simple Imaging Workflow

1. Select Light Source
2. Select Exposure Time or Autoexposure
3. Capture

Band Excision Mode

Easily excise your DNA bands from an agarose gel with our Band Excision mode. Designed to allow the user to cut bands out of the gel with the system door open. The UV light automatically turns off after 5 minutes, which ensures the light will not be accidentally left on.



Specifications

Catalog Number AC2801

Automation Capabilities

Workflow Imaging	Yes. Select application and imaging parameters are automatically adjusted.
Autofocus	Yes
Auto Exposure	Yes
Flat Fielding	Yes

Applications

Blotting	Chemiluminescence, Chemifluorescence, X-ray films
Protein Gel Electrophoresis	Silver stain, Coomassie blue, etc.
Nucleic Acid Electrophoresis	EtBr, etc.
Fluorescence Detection	Cy2, GFP, FITC, etc.
Chemi Acquisition Modes	Cumulative for real time development, multiple for sequential acquisition

Hardware Specifications

Camera	6.1 MP 16-bit CCD camera
Cooling	-50°C
Marker Imaging	Yes
Filter Wheel	Orange filter included (e.g. EtBr)
EPI White Light	Yes
EPI Blue Light	Yes
Field of View	20 x 15 cm
Computer	11.5" touch screen computer
Dynamic Range	>4 orders of magnitude
Data Output	16 bit .tif or .jpg
Footprint	15 x 12 in (38 x 30 cm)
Analysis Software	1 license included